

GALAXY

APARTMENTS

KURLA (E)

LOOK NO FURTHER...



A Project by



HDIL Creating Value

Microstructures | Megastructures | Infrastructure
Housing Development and Infrastructure Ltd.

GALAXY APARTMENTS

KURLA (E)

AMENITIES*

- ▲ Vitrified flooring
- ▲ Anodized French windows in living room
- ▲ Jaquar or equivalent bathroom fittings
- ▲ High quality electrical switches
- ▲ Cable TV point
- ▲ Intercom connectivity throughout the complex
- ▲ Fire fighting facilities
- ▲ Branded automatic lifts
- ▲ Rain water harvesting
- ▲ Children's Play area

HIGHLIGHTS

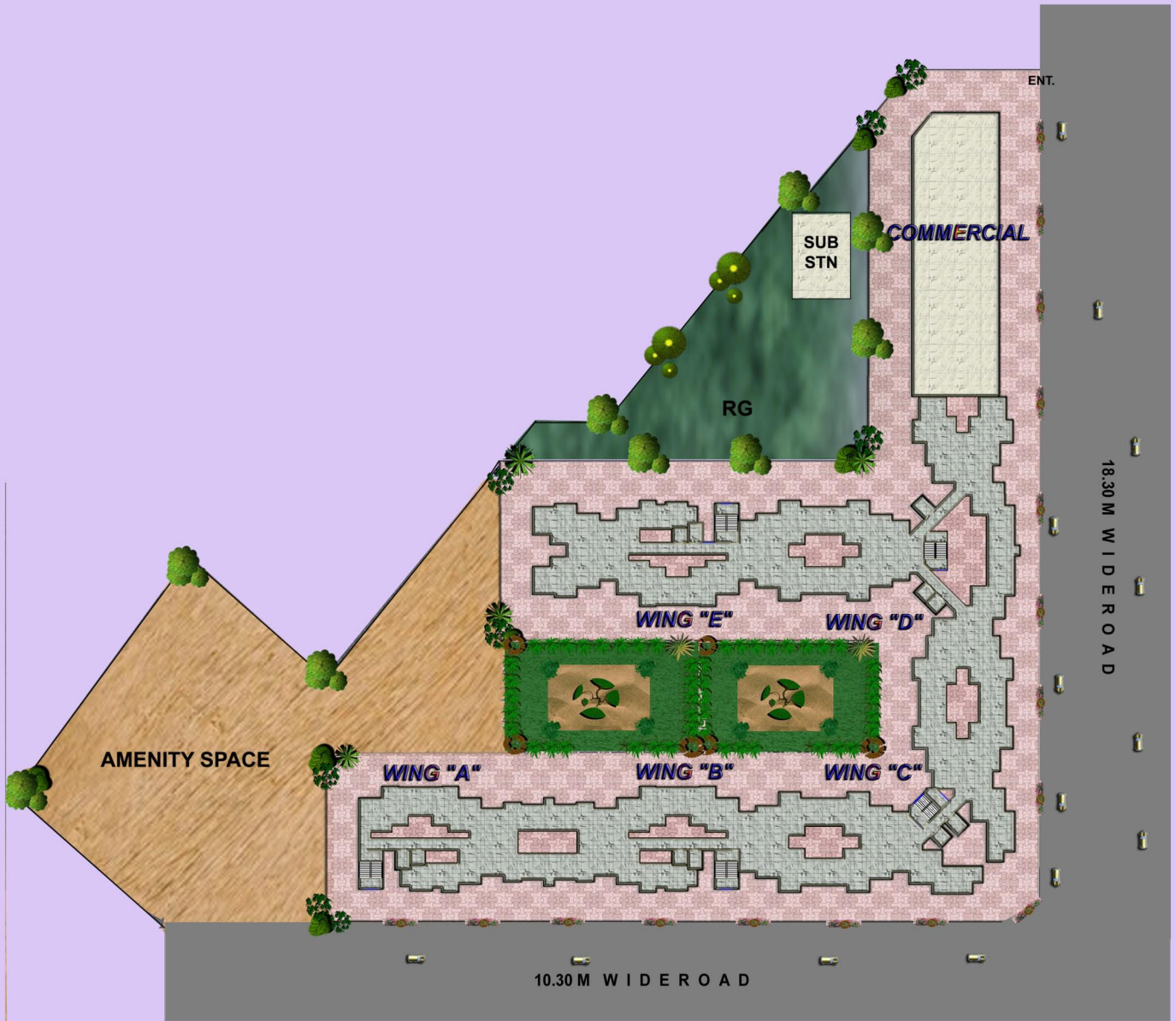
- ▲ No legal charges
- ▲ No share money charges
- ▲ No society formation charges
- ▲ No development charges
- ▲ No electric meter charges

1 & 2 BHK apartments



* Amenities are indicative and subject to change and images are for illustrative purpose only





PROPOSED RESIDENTIAL COMPLEX AT KURLA (E) MUMBAI.



**GALAXY APARTMENTS
WING "A"**



**REFUGE FLOOR PLAN
8 TH FLOOR PLAN**

GALAXY APARTMENTS WING "A"



REFUGE FLOOR PLAN
15TH FLOOR PLAN

GALAXY APARTMENTS WING "B"



TYPICAL FLOOR PLAN
1ST TO 7TH & 9TH TO 14TH

**GALAXY APARTMENTS
WING "B"**



**REFUGE FLOOR PLAN
8 TH FLOOR PLAN**

**2 BHK
920 SQFT**

**GALAXY APARTMENTS
WING "B"**



**REFUGE FLOOR PLAN
15 TH FLOOR PLAN**



GALAXY APARTMENTS WING "C"



N

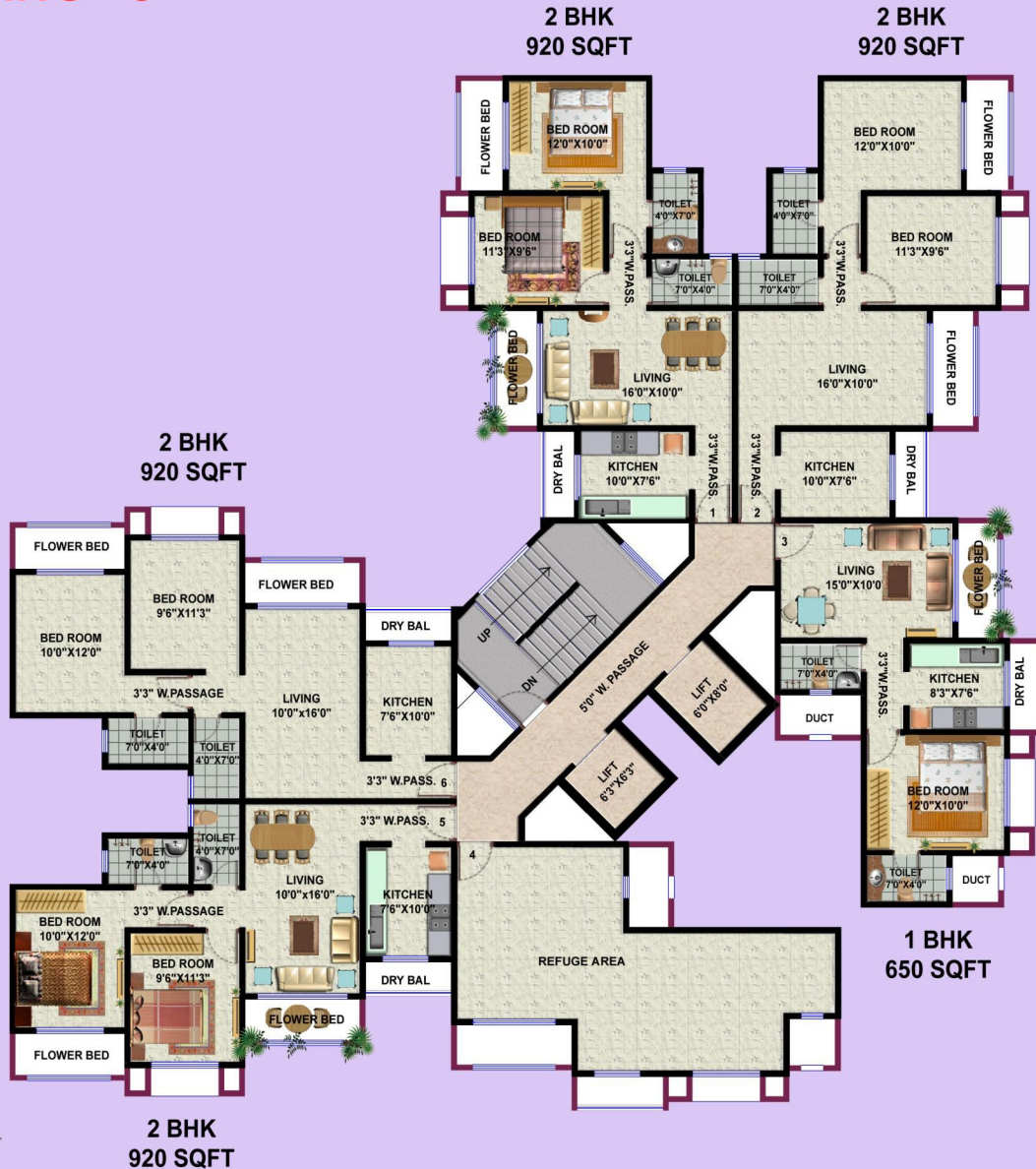
TYPICAL FLOOR PLAN
1ST TO 7TH & 9TH TO 14TH

GALAXY APARTMENTS WING "C"



REFUGE FLOOR PLAN
8 TH FLOOR PLAN

GALAXY APARTMENTS WING "C"



REFUGE FLOOR PLAN
15 TH FLOOR PLAN

GALAXY APARTMENTS

WING "D"



REFUGE FLOOR PLAN
8TH FLOOR

**GALAXY APARTMENTS
WING "E"**



**REFUGE FLOOR PLAN
8 TH FLOOR PLAN**

**GALAXY APARTMENTS
WING "E"**

**1 BHK
650 SQFT**

**2 BHK
920 SQFT**



**REFUGE FLOOR PLAN
15TH FLOOR PLAN**



**1 BHK
650 SQFT**

**2 BHK
920 SQFT**



Site/Sales office: HDIL, Bhandari Estate, Near Bunder Bhavan, Opp MTNL Office, Kurla East, Mumbai 400 071.
Tel : 022-24053930/3731 Email: galaxy@hdil.in Website: www.hdil.in